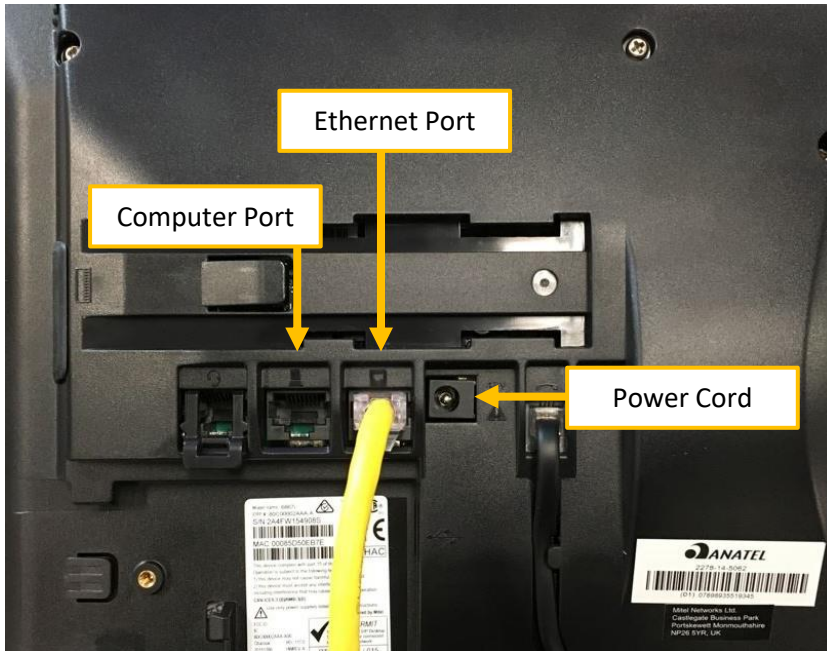




How to plug in your Mitel Phone

When plugging in your Mitel phone, every port has a specific purpose. If the ethernet cord is plugged into the wrong place, your phone will not function properly.

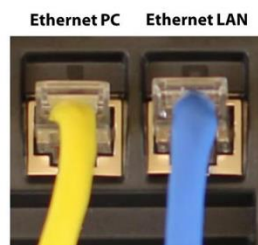


Steps to plug in phone:

- 1) Plug the Ethernet cord into the phone first. Make sure the other end is connected to the Internet.
- 2) Plug in the power cord.
- 3) ***optional** If you are plugging a computer into your phone, plug in a separate ethernet cord in the computer port.*

Below is an example of a phone being used to connect a computer to the internet. The Blue cord in the below example is connected to the internet. The Yellow ethernet cord is then plugging into a computer to provide internet.

Ethernet PC and Ethernet LAN Connectors:
Built-in hardware switch for optimum performance



- Two Gigabit Ethernet hardware switched ports.

